



**J ESTATES**

— *Serving With Purpose*





# A New Era In Real Estate Begins







# Real Estate, Reimagined With Proven Precision

At J Estates, we aren't just entering real estate, we're here to reshape it. With a vision rooted in thoughtful planning and a drive to build with meaning, we are laying the foundation for a new era of development.



Artistic Impression





# Legacy of Strength

Backed by the engineering legacy of J Infratech known for shaping highways, bridges, and critical infrastructure, J Estates enters the space with deep technical roots and unwavering commitment



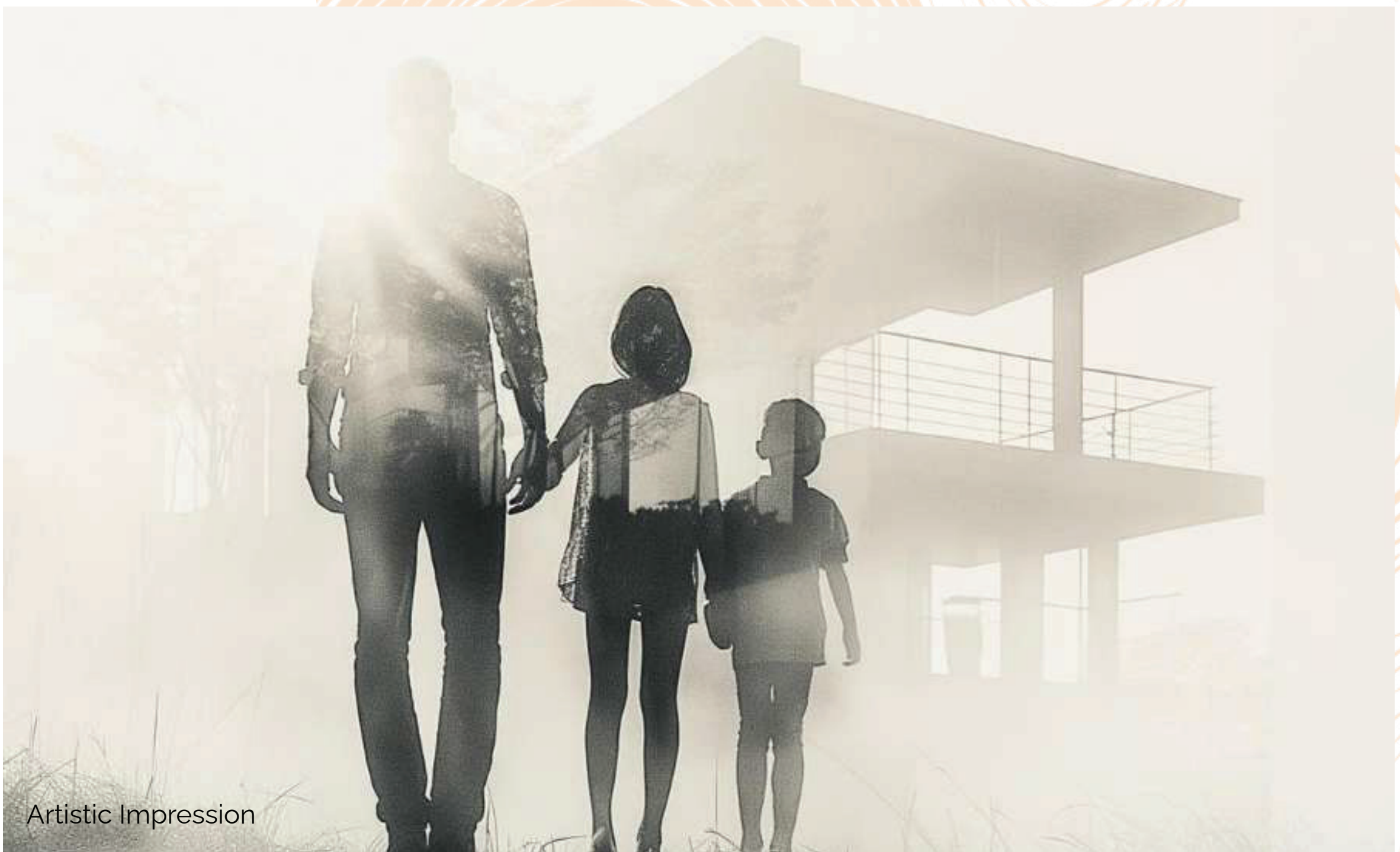
Artistic Impression





# A New Kind of Discipline

From foundational strength to the finest finishes, every detail we imagine is driven by intention. Our architecture is designed to stand the test of time crafted for value, experience, and human life.







# The Genesis The Story Behind J Estates







# A Future-Built Vision:

**Shaping tomorrow with people, planet, and purpose at the core.**

**Environment:** Designing with Nature in Mind Building in harmony with the Earth, sustainable, smart, and future-ready.

**Social:** Building for All Walks of Life Creating inclusive spaces where every life is valued, and every voice is heard.

**Governance:** Trust as the Cornerstone Rooted in integrity, driven by transparency, and accountable by design.







# A Future-Built Vision: For People, Planet, and Principles

At J Estates, we're not just shaping skylines, we're shaping responsibility. As we begin our journey, ESG (Environment, Social, and Governance) isn't a corporate obligation. It's a personal commitment to build with care, foresight, and integrity from the ground up.



Artistic Impression





# Environment: Designing with Nature in Mind



We envision spaces that breathe easy powered by clean energy, rooted in sustainable design, and built with a lighter footprint. Through renewable energy integrations like agrivoltaic farms, solar harvesting, and conscious material choices, our future developments will prioritise long-term environmental harmony over short-term gain. Because we don't just build for today, we build for generations to come.





Artistic Impression

# Social: Building for All Walks of Life

We believe real estate must serve real lives. As we develop new communities, our focus will be on inclusivity, from senior-friendly planning and accessible design to integrated social spaces that foster connection. Our Golden Age Living initiative is just one example of how we aim to design with empathy creating homes that age with you, and communities that grow around you.





# Governance: Trust as the Cornerstone

We will lead with clarity and accountability. With robust compliance frameworks, ethical business practices, and transparent communication, our goal is to build a brand that earns trust, not just once, but every time. Governance for us is not about rules, it's about responsibility to our partners, our customers, and the values we stand by.

At J Estates, ESG isn't a future adjustment, it's a founding principle. Because we believe thoughtful development isn't just possible, it's necessary.

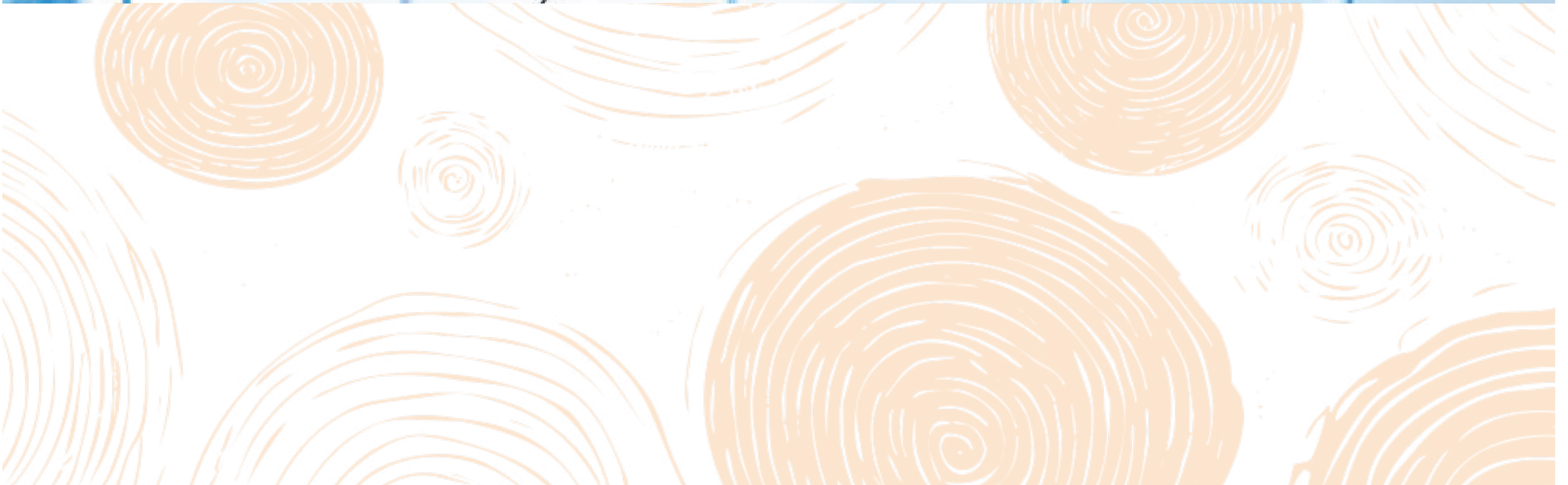


Artistic Impression





# The Team







# ANIL GODARA

Founder & MD

---

With over two decades of experience, Anil Godara brings deep expertise in real estate asset management, project delivery, and strategic leadership. His work spans commercial, corporate, retail, residential, data centers, and Hospitality Sector. He has enhanced the value of portfolios worth over USD 1 billion and managed townships spread across 100+ acres.

He has worked with some of the top indian real estate firms and global private equity, giants indian operating firms contributing to large-scale, high-value projects with strategic insight and operational excellence. His commitment to sustainability is reflected in certifications like LEED Platinum, BSC Sword of Honour, and ISO 45001. Anil continues to steer J Estates toward growth, excellence, and long-term value creation.







# MOHIT JANDU

Co-Founder

---

A civil engineer, Mohit Jandu brings a strong technical foundation and a future-forward mindset to the leadership of J Infratech Ltd. Under his dynamic mindset, the company has excelled from a green-cap infrastructure stewardship firm into an emerging force in real estate of over 5000 cr in across 12 states of India.

With a keen eye for opportunity and a deep understanding of market dynamics, Mohit has been instrumental in steering the company's strategic shift—driving growth, diversifying its portfolio, and building a legacy of trust and transformation. His leadership reflects a rare balance of engineering precision and entrepreneurial ambition, placing J Infratech on a path of sustained progress and innovation.







# BHARAT AGGARWAL

Head - Sales & Marketing

---

A management graduate with over 20 years of experience, Bharat Aggarwal brings proven expertise across Sales & Marketing, Strategic Planning, Budgeting, and Execution. He has delivered excellence across diverse markets including Delhi-NCR, Punjab, and international locations, and has successfully handled all segments of real estate-from residential and retail to integrated townships.

Bharat has been associated with some of the most reputed real estate developers such as Paras Buildtech, Today Homes, AIPL Ambuja, Puri Constructions, Conscient Infrastructure, CRA Developers, and has also worked with one of the largest business groups in Bangladesh, adding international depth to his portfolio.

At J Estates, Bharat continues to lead with vision, leveraging his vast experience to drive growth and elevate the brand.







# SUMIT ANAND MARWAH

AVP - Operations

---

With over 25 years of experience, Sumit brings unparalleled expertise in Senior Care, Operations Management, Hospitality, Business Development, and Customer Relations. A results-driven professional, he excels at transforming complex operations into seamless, resident-centric experiences. His passion for elevating living standards has consistently set new benchmarks in the Senior Care Living sector.

Sumit has been associated with prestigious brands including Accor Group, The Leela Palace Hotels & Resorts, Quintessentially Lifestyle, Antara Senior Living, and Holistic Senior Care. He has also collaborated with leading real estate developers, bringing a holistic understanding of luxury hospitality and purpose-driven senior living communities.

At J Estates, Sumit leverages his expertise to shape world-class senior living communities that prioritize dignity, comfort, and excellence; creating lasting value for residents, partners, and stakeholders.







# High-Rise Residential

Elevated Living, Engineered with Precision



## Upcoming

- **Project Type:** Wellness-focused design - Retirement Homes
  - **Location:** Sector 36 - Sohna, Sector 63 & Sector 89, Gurugram
  - **Scale:** More than 1 million Sq. ft spread across Approx. 8 Acres
- Golden Age Living crafts more than homes, it curates moments of ease, connection, and quiet joy





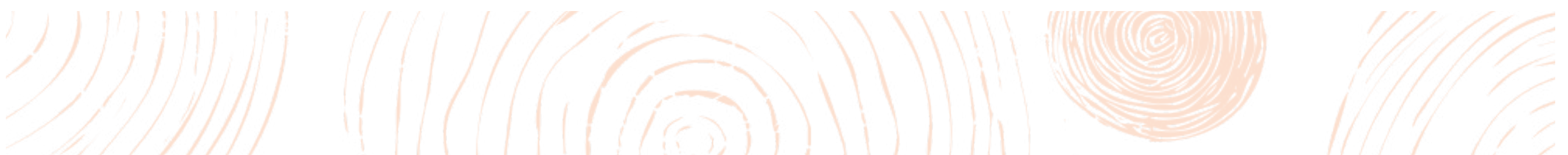
# Commercial / Institutional

Where Business Meets Design



## Delivered

- **Project Type:** Commercial / Institutional
  - **Location:** Plot 93, Sector-44, Gurugram
  - **G+6 Floors**
  - **Tenant - Work pod and Kap Group**
- Smart spaces for smarter enterprises.







# Township

A Community Designed for Harmony



One of the largest plotted developments in Fatehabad

## On-going

- **Project Type:** One Of The Well Planned Plotted Development Under DDJAY Policy
  - **Location:** Sector 12, Fatehabad
  - **Land Area:** 20 Acres Approx
- Plots of infinite dreams





# Learning Begins at Your Doorstep

Anantara's Primary School offers a safe, nurturing learning space just steps from home.

With modern facilities and zero commute stress, every school day feels effortless and enriching.

One of the largest plotted developments in Fatehabad



Actual Image





# Retail & Essentials Just Steps Away

Anantara's SCO Commercial Complex offers easy access to daily needs — from restaurants and salons to supermarkets and pharmacies — all right around the corner, blending convenience with opportunity.

One of the largest plotted developments in Fatehabad



Actual Image





# AGRIVOLTAIC

## ON GOING

- 25 years power purchase agreement with HPCC for supply of electricity generated.
- 10 MWp Project in Hisar
- Generating 16 Mn units annually.
- Expected to start Solar harvesting in August 2025



Artistic Impression.





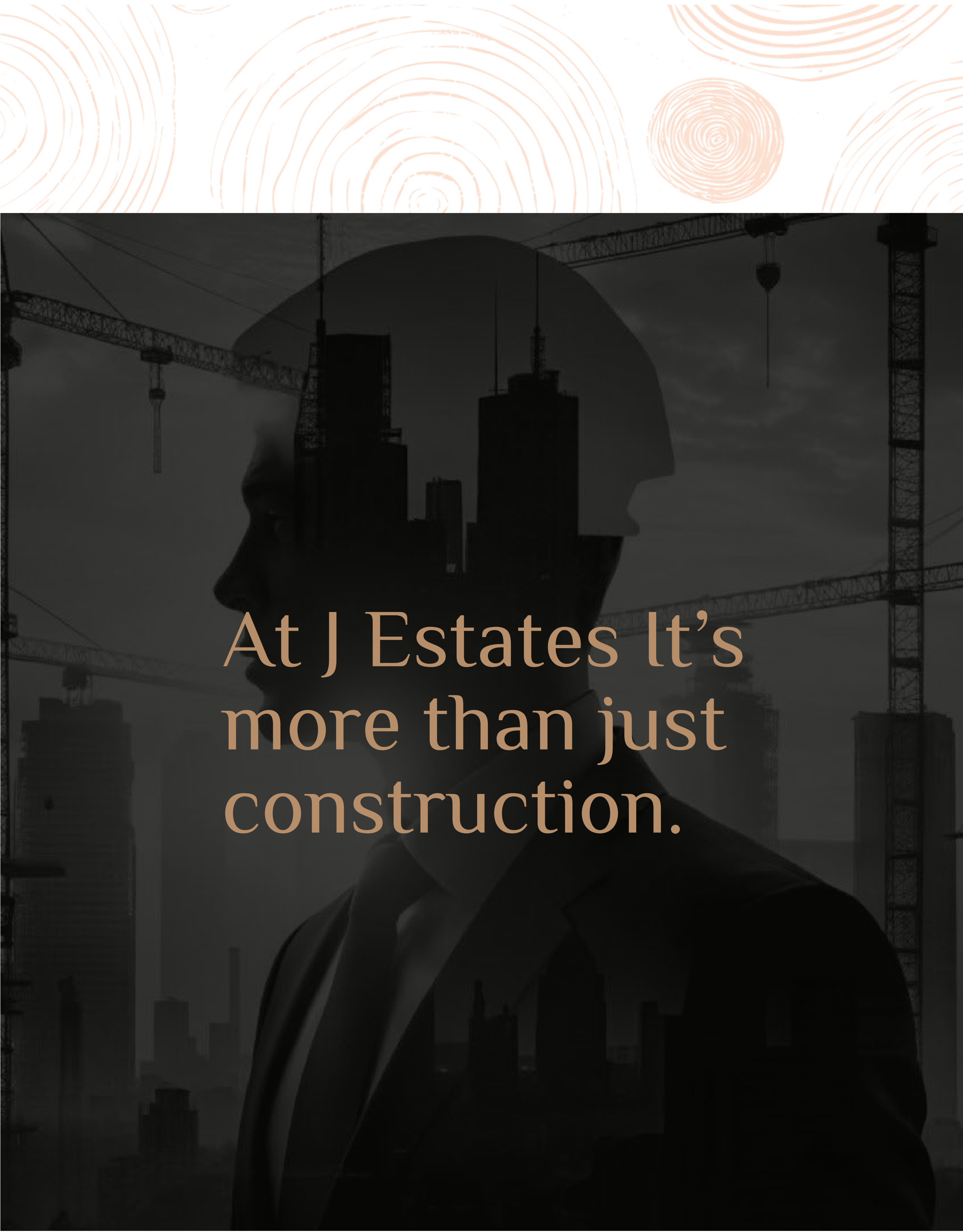
# AGRIVOLTAIC

## UPCOMING

- Through States transmission system for Green Energy Commitments for our upcoming Real Estate assets in Gurugram and to cater other project committed to ESG goals.
- 35 MWp Project in Bikaner Rajasthan.
- Spread across 110 Acres.







# At J Estates It's more than just construction.

Real estate today demands more & more foresight, more clarity, and more purpose. It's not just about what we build, but how it shapes lives and stands the test of time.





# Rooted in Legacy. Driven by Purpose.

With a foundation in large-scale infrastructure, J Estates brings engineering excellence, trust, and intent into every blueprint. We're not repeating the past, we're building forward with clarity and care.





# The New Era Begins

The foundation is strong. The vision is bold. A new era in real estate begins now.



Artistic Impression



**WWW.JESTATES.IN**

**Contact Us :**

J Estates Private Limited  
J House, Plot no. 93, Sector 44, Gurugram  
122002, Haryana, India

**Info@jestates.in | 889 885 0005**

\*Disclaimer : Visuals are for creative representation only. All rights remain with the original creators. Kindly reach out for any concerns